

PVC-U - ANGLE SEAT FILTER VALVE BS (INCHES)

MATERIALS

Retaining ring and filter: PP
O'ring gaskets: EPDM
Body and remaining components: PVC-U

STANDARDS

The valves respect the ISO 9393 standard.
The jointing valves strictly respect the EN 1452 and ISO 15493 standard.
The screwing valves strictly respect the EN 10226-1 and ISO 7/1 standard.

ASSEMBLY

The jointing valves: by jointing always using appropriate glues.
The screwing valves: by screwing according to ISO 7/1 recommendations.

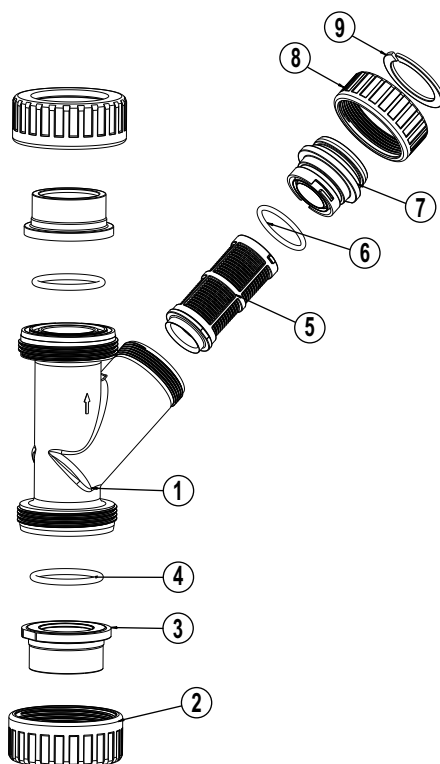
SERVICE PRESSURE

The service pressure, just as an indication, is of 10 bar at 20°C (water) or 6 bar at 40 °C (water).

ABBREVIATION INTERPRETATION

D - Nominal diameter
G - Nominal diameter of the screw
Quant - Quantity of fittings that each box contains
Gr - Approximate weight of fittings in grams
F - Box 39 x 30 x 12

ANGLE SEAT FILTER VALVE - PVC-U



N° REF.	COMPONENT	MATERIAL	QUANT.	N° REF.	COMPONENT	MATERIAL	QUANT.
1	Body	PVC-U	1	6	O'Ring	EPDM	1
2	Nut	PVC-U	2	7	Plug	PVC-U	1
3	Union end	PVC-U	2	8	Joint nut	PVC-U	1
4	O'ring	EPDM	2	9	Retaining ring	PP	1
5	Filter	PP	1				