

# PVC-U - CHECK BALL VALVE

## MATERIALS

Retaining ring: PP  
Ball and o'ring gasket: EPDM  
Body and remaining components: PVC-U

## STANDARDS

The valves respect the ISO 9393 and ISO 16137 standard.  
The jointing valves strictly respect the standard EN 1452 and ISO 15493.  
The screwing valves strictly respect the standard EN 10226-1 and ISO 7/1.

## ASSEMBLY

The jointing valves: by jointing always using appropriate glues.  
The screwing valves: by screwing according to ISO 7/1 recommendations.

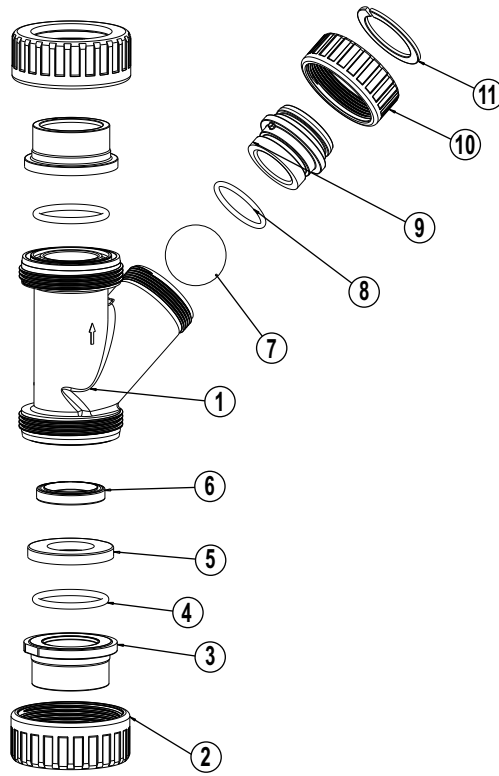
## SERVICE PRESSURE

The service pressure, just as an indication, is of 10 bar at 20°C (water) or 6 bar at 40°C (water).

## ABBREVIATION INTERPRETATION

D - Nominal diameter  
G - Nominal diameter of the screw  
Quant - Quantity of fittings that each box contains  
Gr - Approximate weight of fittings in grams  
F - Box 39 x 30 x 12

# PVC-U - CHECK BALL VALVE



N° REF.	COMPONENT	MATERIAL	QUANT.	N° REF.	COMPONENT	MATERIAL	QUANT.
1	Body	PVC-U	1	7	Ball	EPDM	1
2	Nut	PVC-U	2	8	O'Ring	EPDM	1
3	Union end	PVC-U	2	9	Plug	PVC-U	1
4	O'ring	EPDM	2	10	Nut	PVC-U	1
5	Clamp ring	PVC-U	1	11	Retention ring	PP	1
6	Gasket	EPDM	1				