

# PVC-U - ANGLE SEAT VALVE

## MATERIALS

Lever: ABS  
Sealing collar : PE  
O'ring gasket: EPDM  
Body and remaining components: PVC-U

## STANDARDS

The valves follow the ISO 9393 standard.  
The jointing valves strictly respect the standards EN 1452 and ISO 15493.  
The screwing valves strictly respect the EN 10226-1 and ISO 7/1 standard.

## ASSEMBLY

The jointing valves: by jointing always using appropriate glues.  
The screwing valves: by screwing according to ISO 7/1 recommendations.

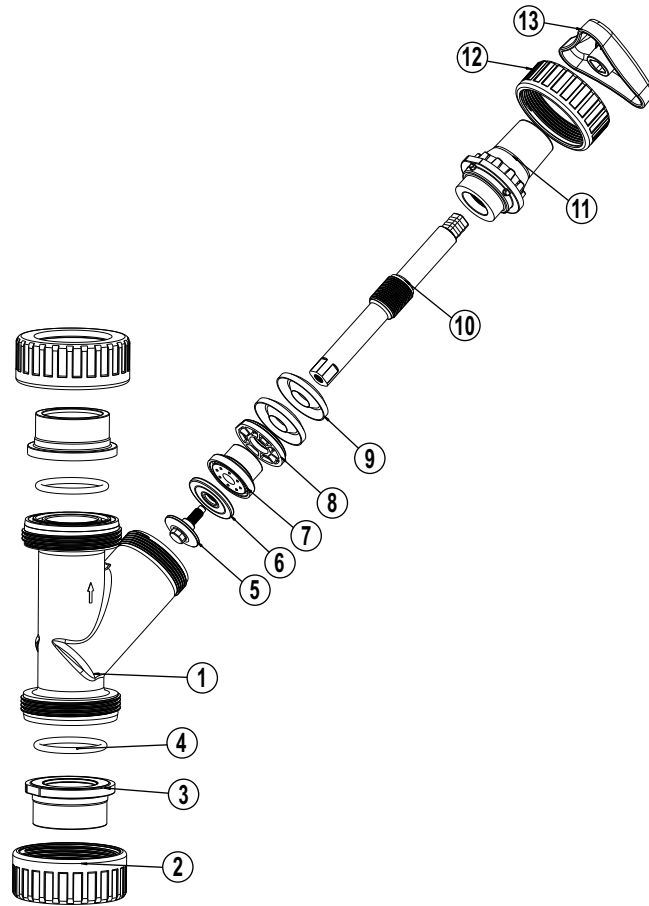
## SERVICE PRESSURE

The service pressure, just as an indication, is of 10 bar at 20°C (water) or 6 bar at 40° (water).

## ABBREVIATION INTERPRETATION

D - Nominal diameter  
G - Nominal diameter of the screw  
Quant - Quantity of fittings that each box contains  
Gr - Approximate weight of fittings in grams  
F - Box 39 x 30 x 12

# PVC-U - ANGLE SEAT VALVE



N° REF.	COMPONENT	MATERIAL	QUANT.	N° REF.	COMPONENT	MATERIAL	QUANT.
1	Body	PVC-U	1	8	Stop ring	PVC-U	1
2	Nut	PVC-U	2	9	Sealing collar	PE	2
3	Union end	PVC-U	2	10	Shaft	PVC-U	1
4	O'ring	EPDM	2	11	Lock nut	PVC-U	1
5	Sealing button	PVC-U	1	12	Nut	PVC-U	1
6	Sealant	EPDM	1	13	Lever	ABS	1
7	Piston	PVC-U	1				